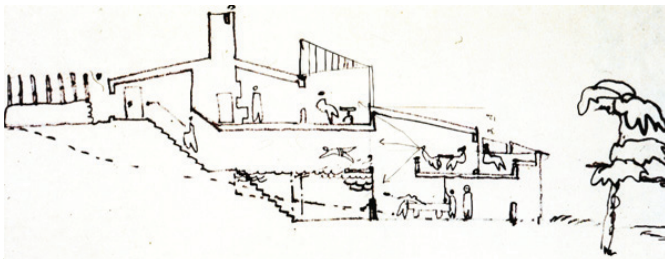


Villa Hultin

Lidingö Stockholm



LOCATION: Lidingö Stockholm, Sweden

CLIENT: Private

TYPE: Architecture

STATUS: Built

DATE: 1983-84

A Private House located on the island of Lidingö, for a creative entrepreneur and businessman.

This house, designed by Torbjörn Ein- arsson, has been celebrated by the Author Charles Jencks in his book New Moderns, as a key building in the evolution of Modern Styles. The form and architec- ture of the house explore the history of the Swedish Landscape through time, as represented by the levels of the land and the house. The architec- ture is a poetic integration of space, time, form and place.



SCULPTURAL FORM

THE NEW MODERNS
ACADEMY EDITIONS
CHARLES JENCKS
historicaust

Goff School – Friend
BOHM – Rheinber
Zundorf H

Lebbeus Wood
Graz Sch

ORGANIC EXPR
Stark
Erskine – Hultin Hse
– St. Goran

ANDO – Koshino Res
– Kobe Chapel

Cook & Hawley
– Students' schemes

NEW EXPRESSIONISM
Saitowitz
Ballar & Ballar
– IBA Housing

corporate pride
Scarpa – Verona Bank SOM – Haj Terminal

BUNSHAFT – National Bank
I.M. PEI – Javits Ctr
– Louvre Pyramids
– Bank of China
HOK TAC
CRS

The Sublime
Leviathan

MEGA-BUILD
Saldie
– Columbus Circle

COATES & NATO
– Cafes

“Spike-Tech”
MOSS
– 708 Hse
– Petal Hse

Larsen – Mnstry of Foreign Affairs

JOHNSON & BURGEE
– Pittsburgh Plate Glass
– 885 Third Avenue

advertising
architecture

MONUMENTAL EXPRESSIONISM
“oil-colonial”
TANGE
– Royal Palace, Jeddah
– DUB
– Akasaka Prince Hotel
– Tokyo City Hall
– Bologna
– Skopje

JAHN
– State of Illinois Ctr
– Messe, Frankfurt
– Skyscrapers
BOHM
– Zueblin Hqtrs
PELLI
– World Finance Ctr
– MOMA Tower