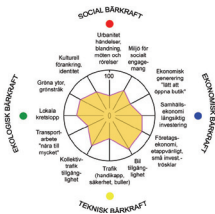
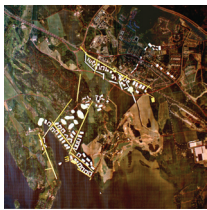


# Vision Framtid Bro

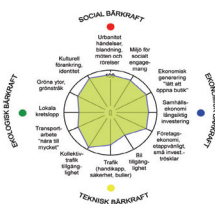
Commission for Upplands-Bro municipality, 2008



## Small (2 000 housing units):

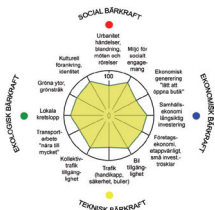
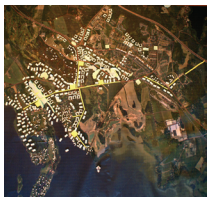
Group Small proposed a sparse pattern of low density settlements.

The Group felt the shortage of houses to achieve criteria for public transport and commercial services.



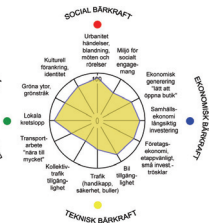
## Medium (5 000 housing units):

Group Medium suggested garden city settlements in a linear form from the station down towards the lake. The station area was in focus.



## Large ((10 000 housing units):

Group Large with the double amount of units was happily noticing they could grow a comprehensive pattern along public transport and changing the focus on the station town as a whole. The bay was extended utilizing the wetlands as an asset for both birdlife and people.



## Centrum(250 housing units):

Group Centrum had the task of looking more closely into the new main street that could link the existing centre with the new center created by the new commuter station. They also added units to link the scattered housing areas up north.

PLACE: Upplands-Bro Sweden

CLIENT: Upplands-Bro kommun

TYPE: Master planning

STATUS: In process

DATE: 2008

REF: Plan- och exploateringschef

Emelie Grind +46 8 581 692 02

tf chef Barbara Vincent

+46 8 581 691 56

Master planning in workshops with locals, civil servants, politicians and builders.

Arken organized the work as a charrette where groups were making layouts with small, medium and large approaches and tested different settlement types.

All within the framework of a small railway town eager to extend its growth towards lake Mälaren.



0 250 500 750 1000

